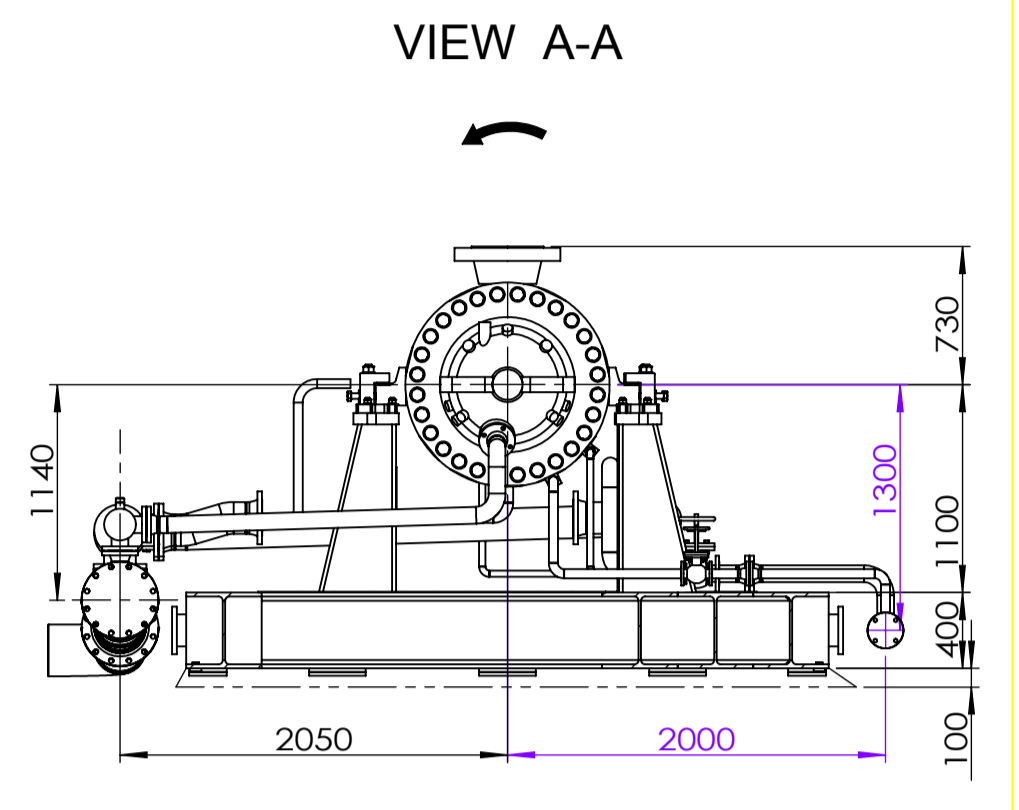
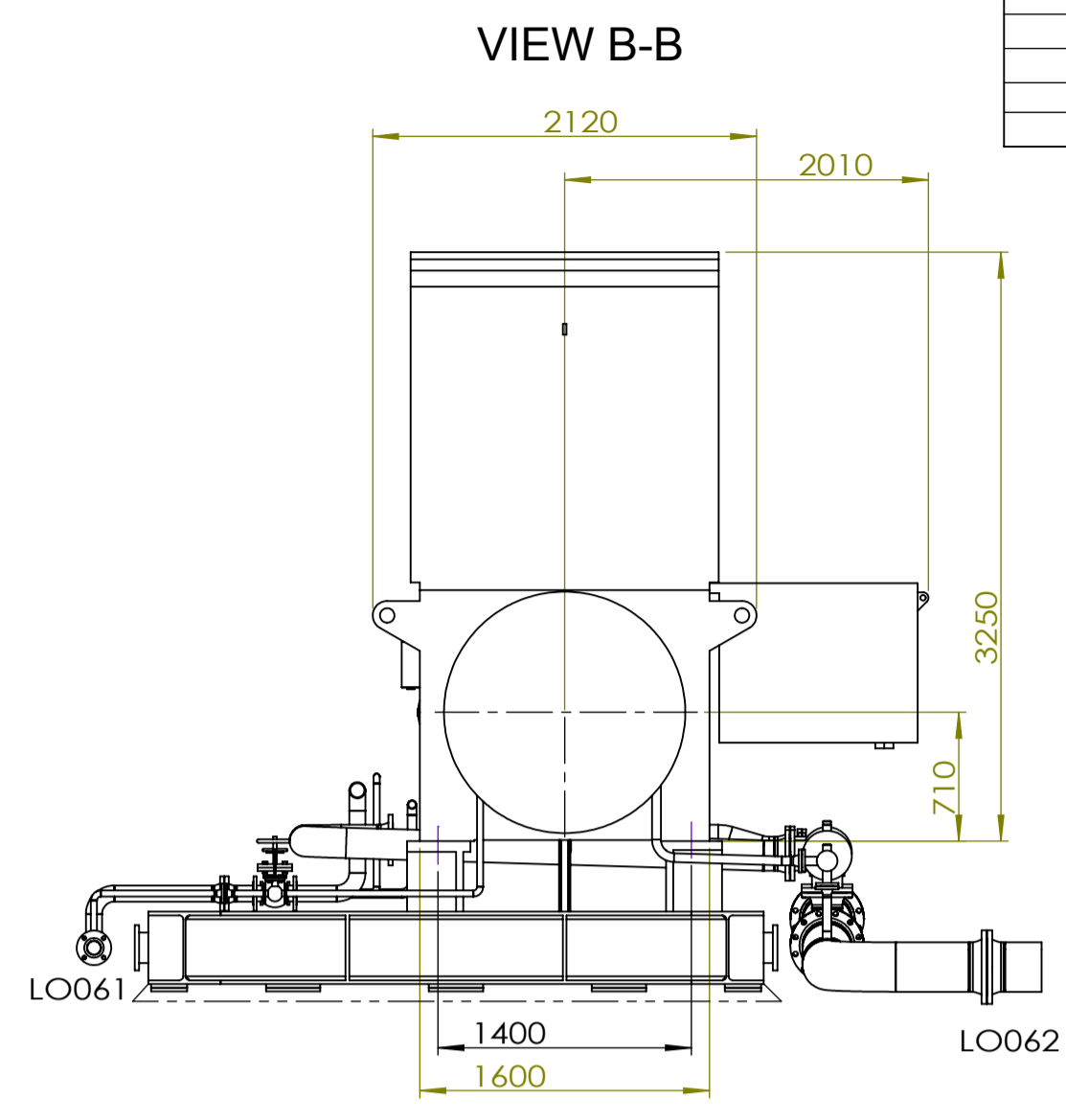
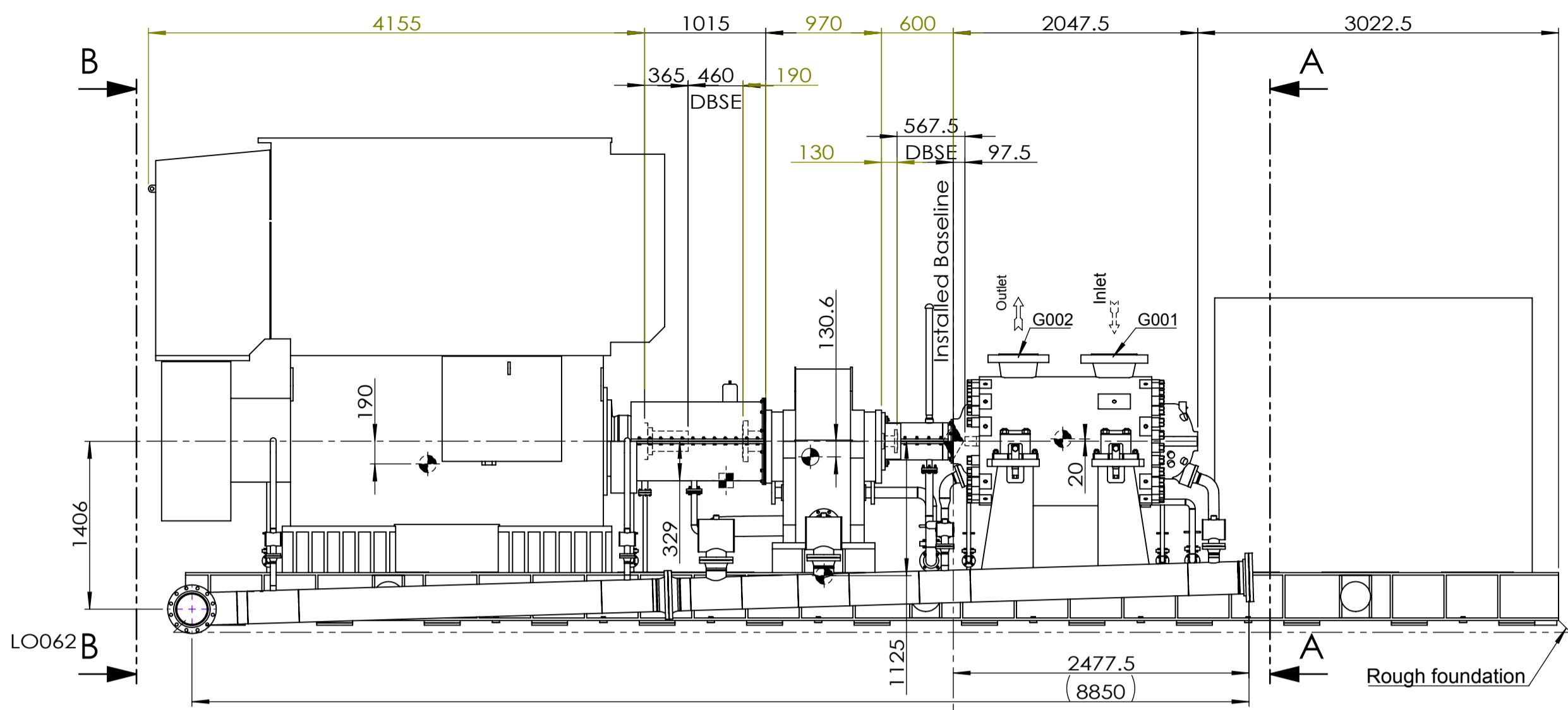


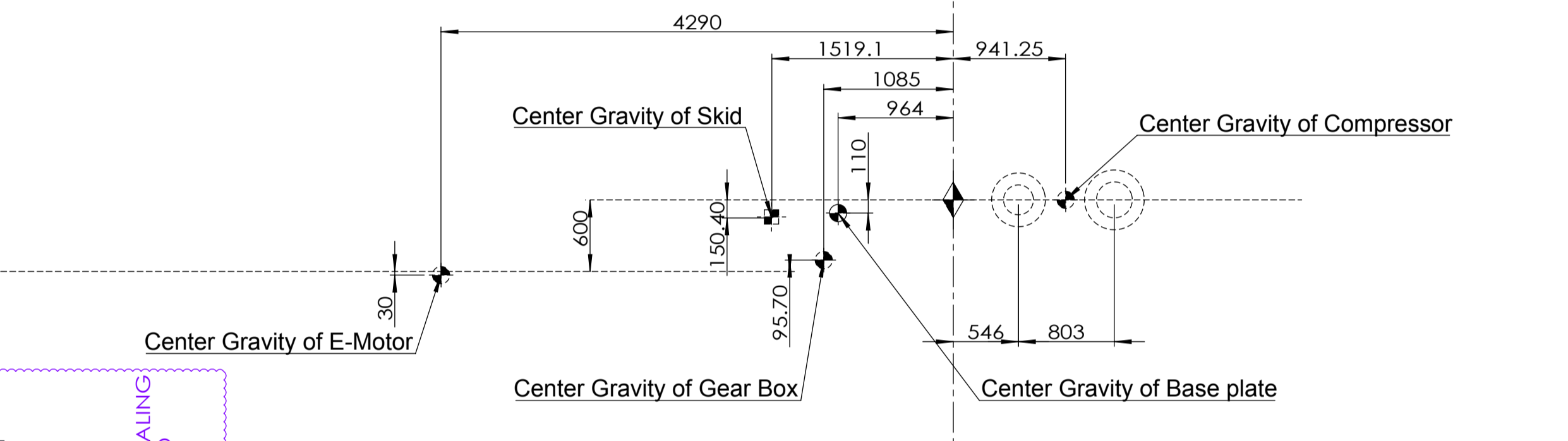
ONLY FOR REFERENCE



- GENERAL NOTES
- Center Gravity of Machine
  - Installation Reference Center
  - Center Gravity of skid
- With the project improving gradually, the size will have little adjustment

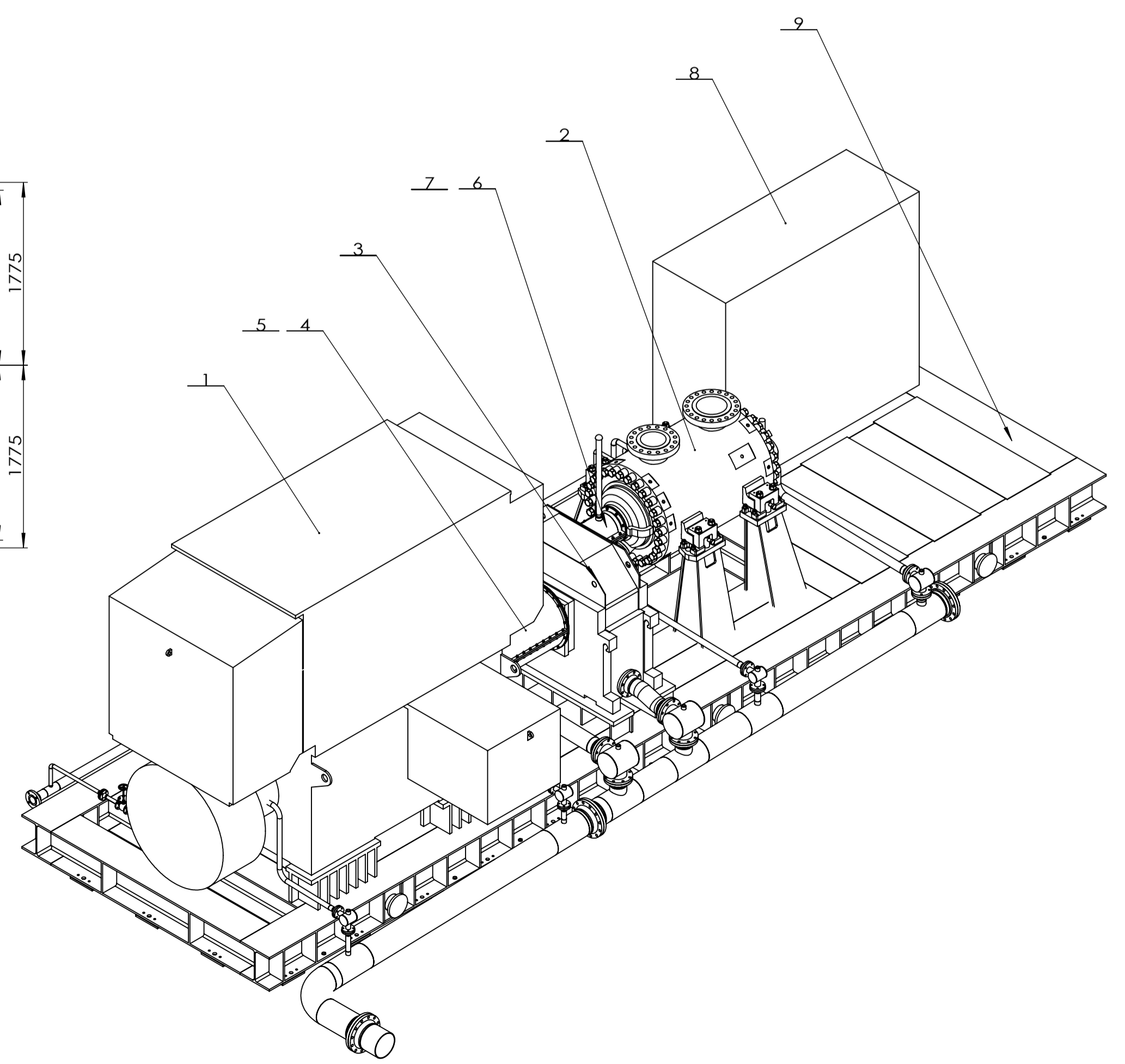
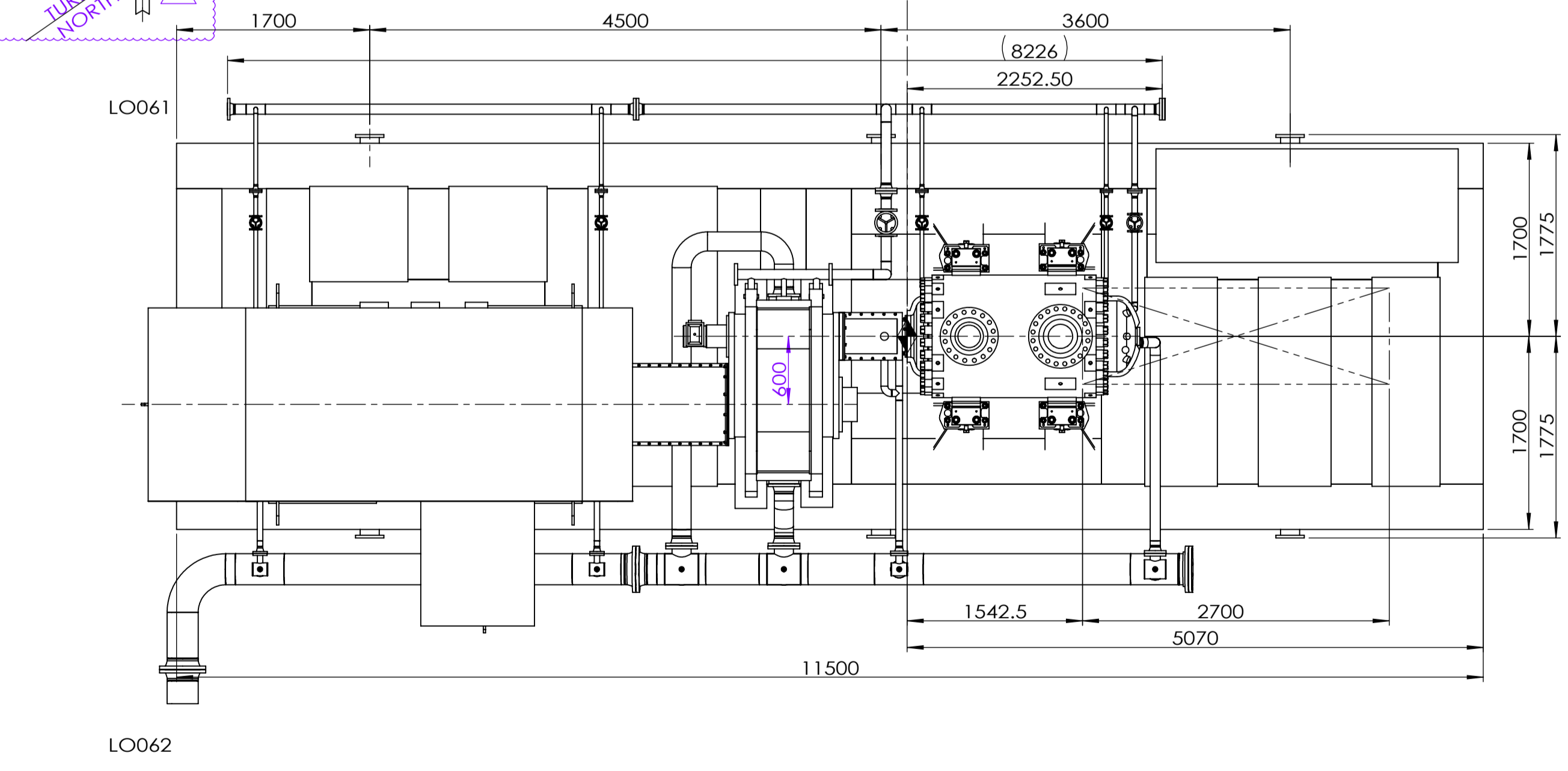
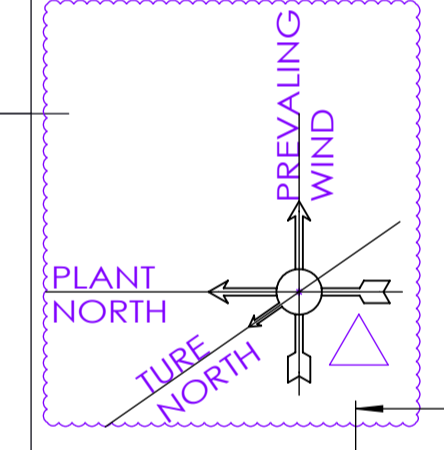
WEIGHT TABLE

	MACHINE WEIGHT	FOR MAINTAINANCE
SKID	62640	N.A
ELECTRIC MOTOR	19690	19690
COMPRESSOR BCL406	13000	5000
GEAR BOX	6850	4310
BASEPLATE	22000	N.A



Connection List

ITEM	DESCRIPTION	APPLICATION CODE & FACE	TIE POINT	RESPONSIBLE
LO-062	Lube oil return header compressor outlet	ASME B16.5 10" 150# RF	To oil reservoir	SBW
LO-061	Lube oil supply header compressor inlet	ASME B16.5 3" 150# RF	From oil reservoir	SBW
G-002	Compressor outlet	ASME B16.5 12" 600# RF	Purchaser	Purchaser
G-001	Compressor inlet	ASME B16.5 10" 600# RF	Purchaser	Purchaser






SCALE: 1:1

DRAWING TITLE: Motor driven compressor arrangement

SHEET No. 1 OF 1

MARK	QTY	NUMBER	SIGNATURE	DATE	Motor driven compressor arrangement		
PREPARED		叶仁仁	STANDARD	蒋占朋	DRAWING MARK	WEIGHT	SCALE
DRAWN		叶仁仁	PROCESS	梅元平		62640	1:1
CHECKED		周慧	APPROVED	李耀祖	TOTAL	1	SHEET SHEET 1
REVIEW		周慧	REVISION	A			
AUTHORIZED				2015年8月24日			

沈阳鼓风机集团股份有限公司 SHENYANG BLOWER WORKS GROUP CORPORATION